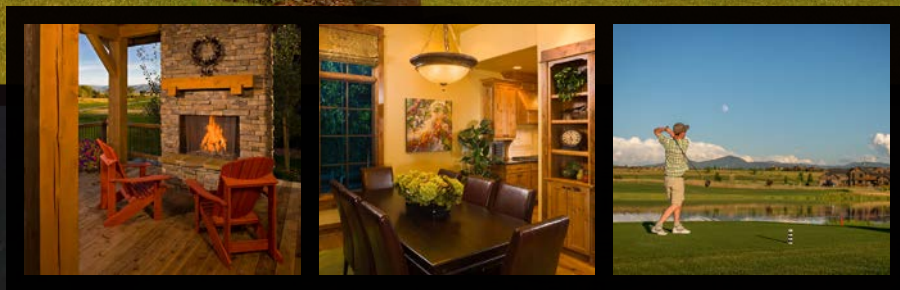


HYALITE

CLUB HOME



BLACK BULL

BOZEMAN'S PRIVATE GOLF COMMUNITY

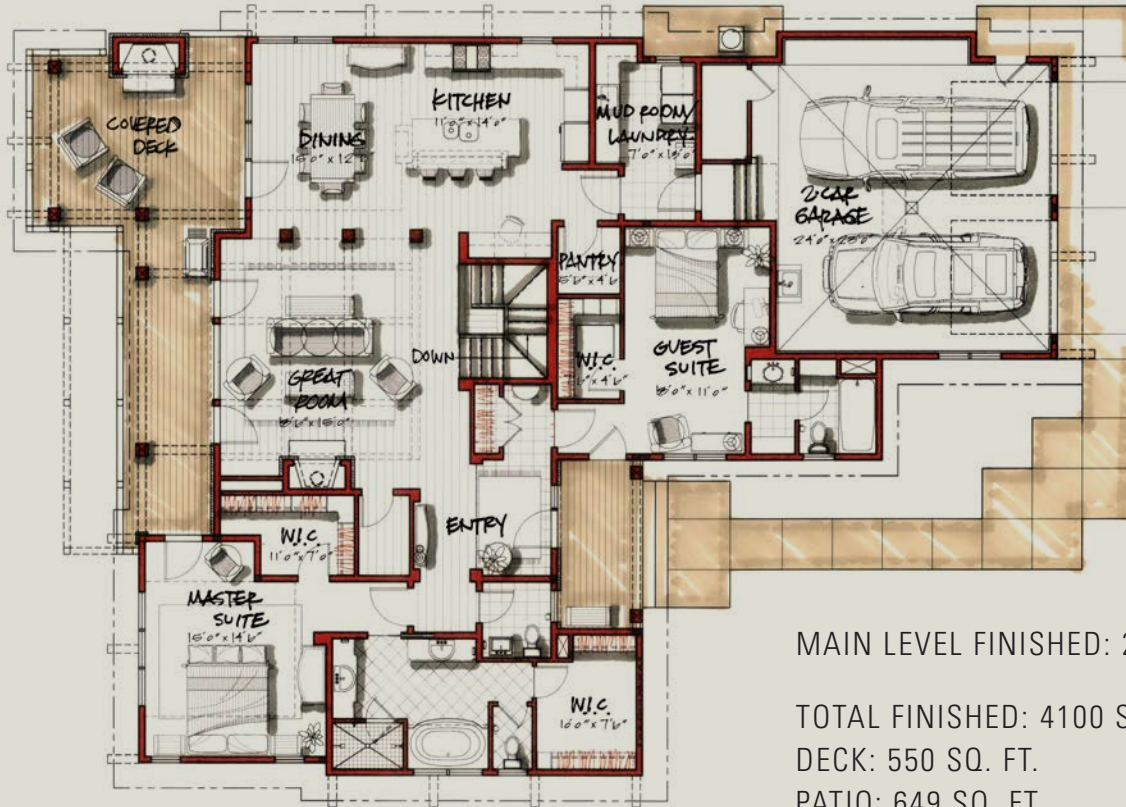


BlackBullBozeman.com | 406.556.5011 | Bozeman, Montana

ALL INFORMATION IS DEEMED RELIABLE, BUT IS SUBJECT TO CHANGE.

Hyalite Club Home

4 Bedrooms + 4½ Baths



MAIN LEVEL FINISHED: 2313 SQ. FT.

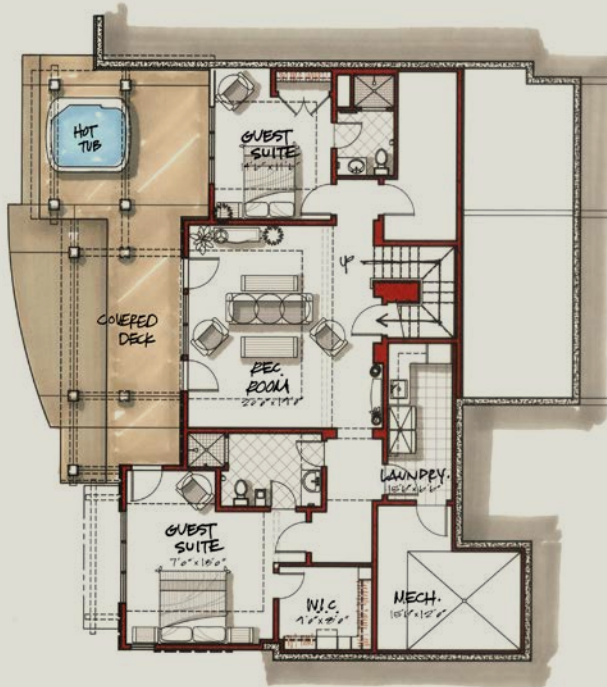
TOTAL FINISHED: 4100 SQ. FT.

DECK: 550 SQ. FT.

PATIO: 649 SQ. FT.

2-CAR GARAGE: 603 SQ. FT.

TOTAL: 5902 SQ. FT.



LOWER LEVEL FINISHED: 1787 SQ. FT.

Hyalite Club Home Details:

- Open floor plan with plenty of room for guests and privacy
- Great room with gas fireplace with dry-stack finish, timber accents and access to the covered deck
- Main level master suite with his-and-hers walk-in closets and access to the covered deck
- Kitchen with granite slab countertops, a reclaimed wood bar top, and high-end stainless steel appliances
- Guest casita with private entrance
- Lower level with lounge, two guest suites, and laundry area



BlackBullBozeman.com | 406.556.5011 | Bozeman, Montana

Depictions contained in this brochure are representational of the home that may be constructed by the developer, however, certain homes on specific lots will have mirrored floorplans, turned garages, and varying landscape features. In certain instances the developer may be required to make plan and material changes that will be of substantially similar quality to what is represented. Measurements of areas and square footages are approximate and deemed reliable but not guaranteed. This is not an offer to sell or lease real estate. Void where prohibited.